

MAPPING THE LEVEL OF EARTHQUAKE RISK OF HOLTEKAMP BRIDGE AT JAYAPURA REGION BASED ON EARTHQUAKE DATA AND MICROTREMOR MEASUREMENT

Dandy Waromi^{1*}, Dicky Muslim², Agung Mulyo, Nur Khoirullah¹,

¹Departemen Geologi Terapan, Fakultas Teknik Geologi, Universitas Padjadjaran

*Correspondence Email: doodle16001@mail.unpad.ac.id

ABSTRACT

Holtekamp bridge which is located in Jayapura region between Hamadi and Holtekamp Village in the Northern part of Papua island. The region constitutes an active earthquake zone with the recurrence frequency and magnitude of the earthquake are relatively high. The region is located on an active fault zone. The seismotectonics setting in this region is directly implied to the calculations of the seismic design for engineering and design purposes on building and non-building structures including Holtekamp bridge in Jayapura city. To recognize a characteristic of the earthquake at the site of interest, the historical earthquakes (background) data surrounding the study area. Local microtremor measurements data are analyzed by means of a probabilistic seismic hazard analysis (PSHA). Deterministic seismic hazard analysis (DSHA) using some ground-motion models in attenuation relationship equations. In resulting of seismic hazard parameter as represented by peak ground acceleration (PGA), values in earthquake scenario at operating basis earthquake (OBE), maximum design earthquake (MDE), and maximum credible earthquake (MCE) conditions. These values are used as a reference to evaluate the compliance of the current technical aspects with the new required design facing the updated seismicity parameters.

Keyword : Jayapura, Holtekamp, seismic Hazard Analysis, Peak Ground Acceleration.

INTRODUCTION

Holtekamp bridge is located in Jayapura region between Hamadi and Holtekamp village in the Northern part of Papua island. The region constitutes an active seismic region that is having a high earthquake intensity in term of the frequency and magnitude parameters. Earthquake sources that threaten the region located in the sea and on land due to subduction and faults activity (Suwarna, et al, 1995). (Fig. 1). The potential seismic hazard in the region had been observed widely by national researchers such as Irsyam, et al. (2010) and 2017, and Cipta, et al. (2016) as the parameter is represented by a peak ground acceleration (PGA) value. Since earthquake occurrence always occurs repeatedly, required analysis of earthquake hazard to estimate the events that will occur in the future. An important requirement in earthquake disaster mitigation is to do an accurate assessment of seismic hazard, so the potential damage from earthquakes can be predicted.

THE GEOLOGICAL SETTING OF THE RESEARCH AREA

Based on the Jayapura geological map, the study area consisted of alluvial and coastal deposits :

gravels, pebbles, sands, silt, and muds in swampy and coastal area. Recent coralline limestone fragments are found in the coastal deposits.

Jayapura is the domain of the Western-moving Pasific Ocean, which is composed of several tectonic sub-plates. Most of the oblique convergence with the North-moving Australia-New Guinea-plate is accommodated by subduction at the New Guinea Trench, but a significant component of transpressional deformation can be seen along several major E-W trending, left-lateral systems in northern half of New Guinea island (Koulali et al, 2014).

RESEARCH METHOD

The strength parameters of the earthquake in one place can be seen through ground acceleration (Peak Ground Acceleration). Ideally, these parameters are measured by accelerograph installed permanently. However, due to limitations of the equipment, then the value of the ground acceleration can be estimated through the empirical approach, i.e. by converting the earthquake parameters (locations and magnitude) into the parameters of acceleration in a particular place.

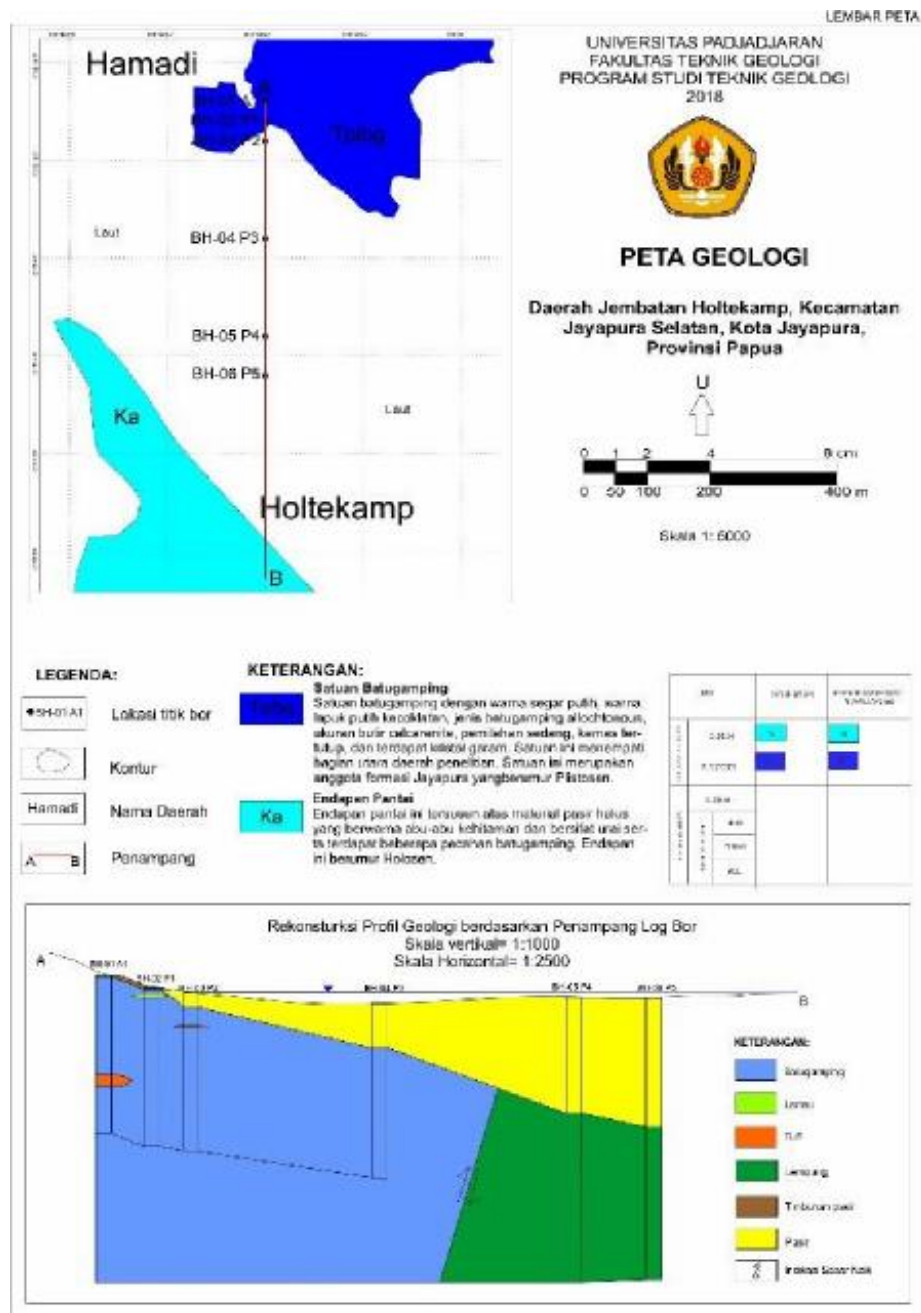


Figure 1. Geological Map around the Holtekamp Bridge of Jayapura Region

The seismicity setting of the research area can be assessed by the meaning of probabilistic seismic hazard analysis (PSHA) and/or deterministic seismic hazard analysis (DSHA) approach by considering the availability of earthquake data, geological information, and soil/rock properties at the site-specific. This method aims to analyze the probability of exceeding a given level of ground shaking that caused by earthquakes by considering all possible earthquakes that could occur in a region in a given period. This probabilistic method has accounted for the uncertain factor in the seismicity and also the possibility of earthquake events that exceed the ground motion design (worst scenario) (Fig. 2). All

parameters used in the deterministic method have been included in this probabilistic method. This method assumes the earthquake magnitude M and distance R as continuous independent random variables, the peak ground acceleration (PGA) can be derived by following some published ground-motion models in attenuation relationship equations for a shallow crustal earthquake. In general, the theory of total probability can be expressed in the equation by Douglas (1964-2010) as follows:

$$H(a) = \sum v_i P[A > a | m, r] f_{Mi}(m) f_{Ri}(m) dr dm \dots (1)$$

Where v_i is the annual rate (with a magnitude higher than the limit value of M_{oi}) on the source of the earthquake I , $fMi(m)$ and $fRi(M)$ (r, m), respectively, the probability density function of magnitude and distance. $P[A > a, m, r]$ is the probability of an earthquake with a magnitude m at a distance r that gives the maximum acceleration A at the site that is higher than a .

The earthquake source models used in the calculation derived from sources which are located around the area of investigation would be possible to give effect to the area. Earthquake sources are used usually have a maximum range of about 400 km from the study area (Fig. 3).

To obtain characteristic of soils or rocks at the site of interest, a microtremor measurement is undertaken using a portable digital seismometer (short period, 3 elements) type TDL-303 for sensitive velocity sensor with sampling frequency until 100 Hz, equipped by data cable, digitizer, solar panel, GPS, and software for data acquisition and analyzing the HVSR (horizontal to vertical spectral ratio). A published software namely GEOPSY

is also used to acquire and analyze the HVSR values.

Therefore, the PGA values of respective conditions are classified referring to the classification of the earthquake risk level (Fauzi, et al., 2005 in Lunga, et al., 2015) [7] as follows;

Table 1. The classification of earthquake risk level (modified Fauzi, et al., 2005 in Lunga, et al., 2015)

| Risk Level | Column A (t) | Column B (t) |
|------------------|------------------|------------------|
| Very low risk | < 0.025 | < VI |
| Low risk | 0.025 – 0.051 | VI – VII |
| Medium risk 1 | 0.051 – 0.076 | VII – VIII |
| Medium risk 2 | 0.076 – 0.102 | VII – VIII |
| Medium risk 3 | 0.102 – 0.127 | VII – VIII |
| High risk 1 | 0.127 – 0.153 | VIII – IX |
| High risk 2 | 0.153 – 0.204 | VIII – IX |
| High risk 3 | 0.204 – 0.306 | VIII – IX |
| Very high risk 1 | 0.306 – 0.612 | IX – X |
| Very high risk 2 | > 0.612 | > 6 |

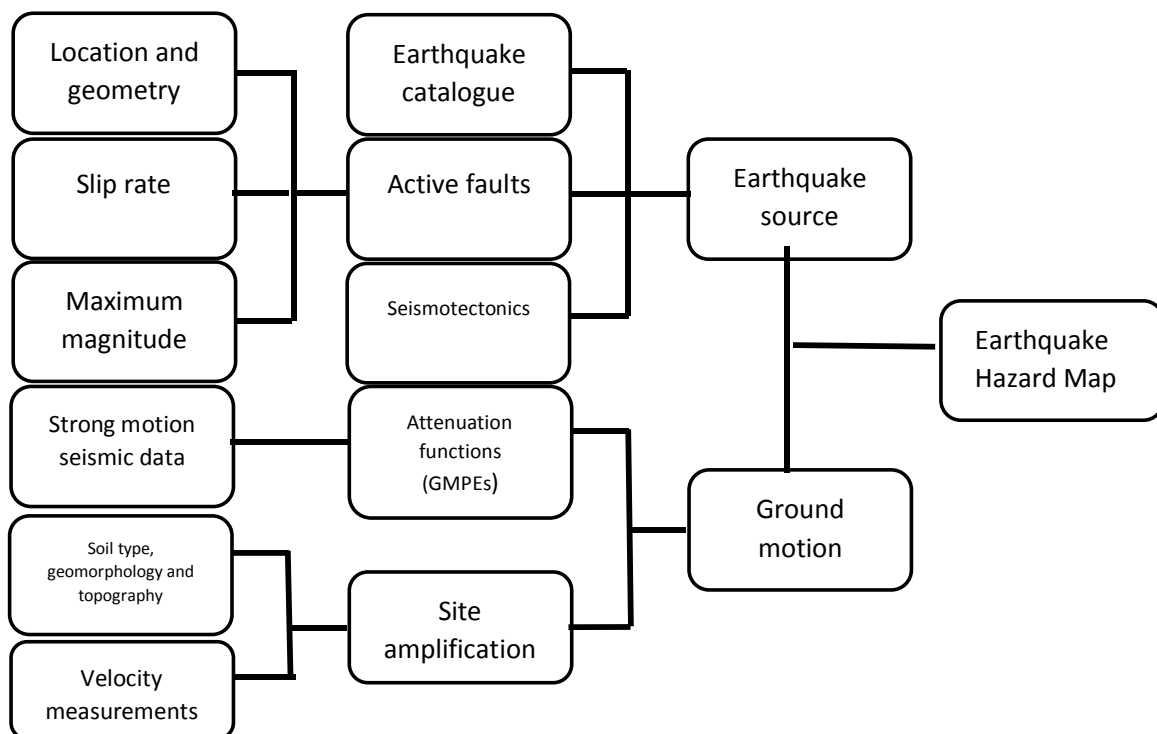
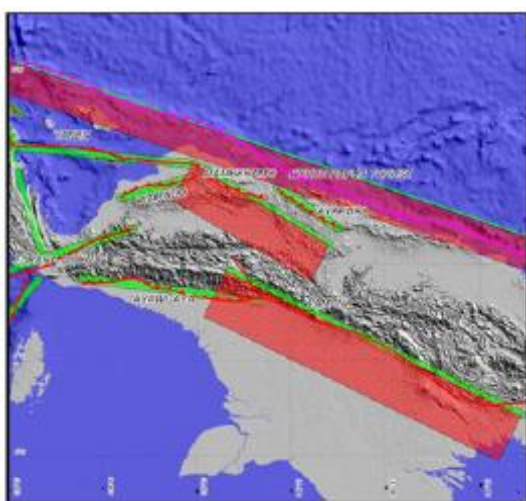


Figure 2. Flowchart of earthquake hazard calculations using PSHA method

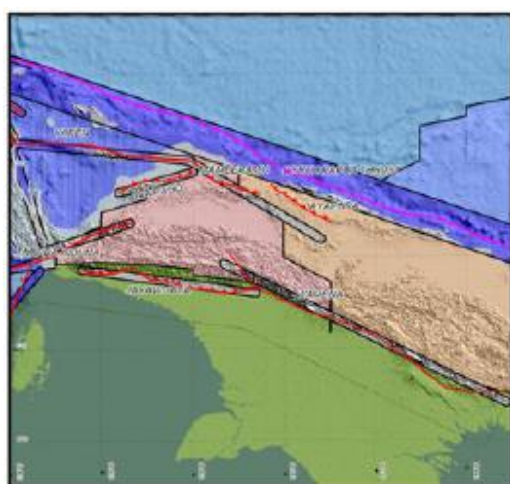
RESULTS

The seismic data is obtained from ISC earthquake catalog from 1964 to 2011, is used to identify the figure a and b (Fig.6). Value based on the Gutenberg-Richter equation as background earthquake source parameters. In this model, it is assumed that earthquake can occur anywhere with equal probability.

The earthquake source models using three types of source models are subduction model; comes from the New Guinea Trench subduction zone (North Papuan Thrust), fault models; derived from Yapen fault, Tarera Aiduna, Wamena, Mamberamo, Waipoga, Jayapura, and Jayawijaya, dan background models to accommodate unknown earthquake (Suwarna, et al, 1995).



(a)



(b)

Figure 5. Earthquake source models to calculate probabilistic seismic hazard at Jayapura. (a) source models of faults and subduction, (b) background source mode

The frequency and magnitude of the earthquake are relatively high. Within the last 14 years, from 2000 to 2014 there were 607 earthquake events with magnitude 4 to 6,5 Richter scale. (Fig. 6).

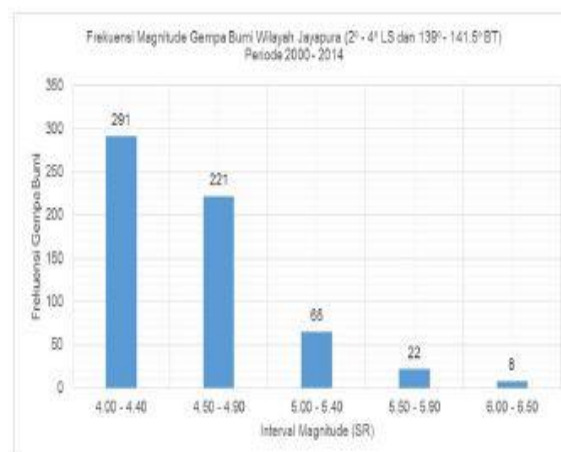
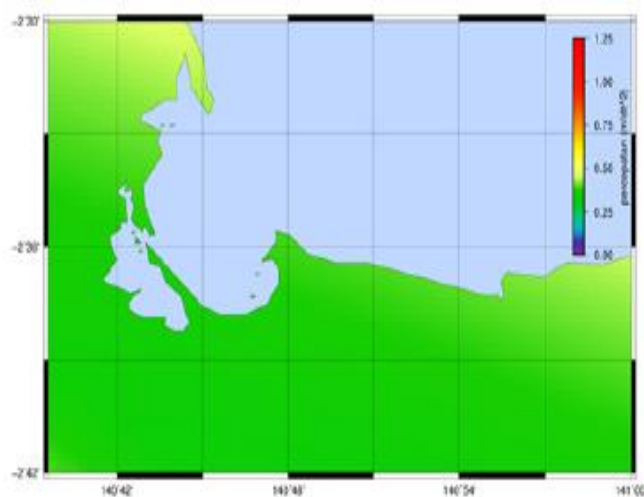


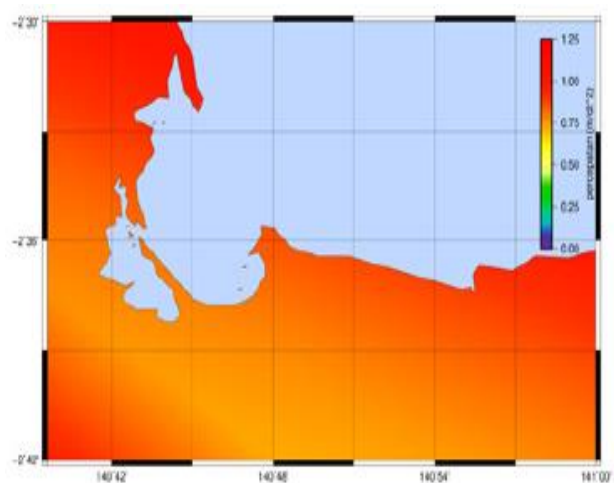
Figure 6. Frequency and magnitude of the earthquake in Jayapura region

The modeling and mathematical calculations are done by using Earthquake Risk Model (EQRM) software, developed by Geoscience Australia (GA). Results were used for analysis of earthquake hazards around Holtekamp Bridge area is the distribution of earthquake acceleration value (PGA) with probability exceeded 10% for a period of 500 years. PSHA calculations performed for the peak ground acceleration (PGA), spectra 0.2, and 1.0 seconds on bedrock (Fig. 7) (Boore and et al, 2008) and (Campbell and et al, 2008) and at the surface. (Fig. 8).

Based on the earthquake hazard map above, that Jayapura regions have quite a high earthquake hazard. Areas high hazard are generally a residential area and the center of community activity. Areas that are at high disaster prone are low-lying areas around the coast an area with a dense population, such as Koya, Abepura, Kotaraja, Entrop, Hamadi, and Holtekamp as a construction site for Holtekamp bridge. While areas that have relatively lower hazard only a small part in the highland area located in Gurabesi and Polimak Circle.



(a)



(b)

Figure 7. (a) Earthquake hazard maps around the holtekamp bridge on bedrock for the peak ground acceleration (PGA); (b) spectra 0.2

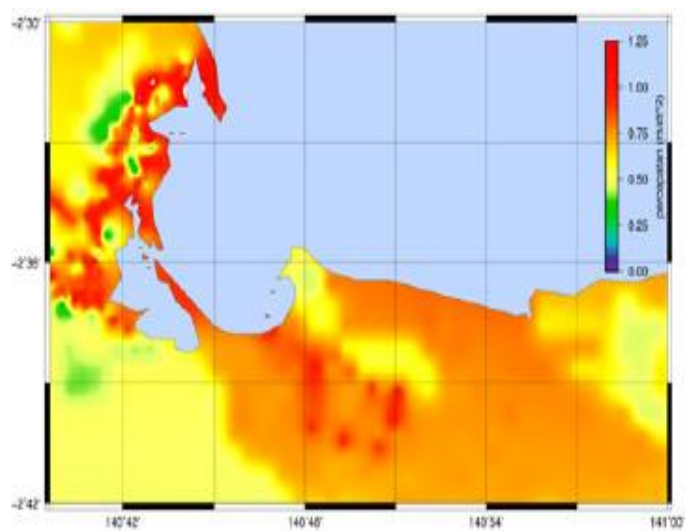


Figure 8. Earthquake hazard maps around the holtekamp bridge at the surface for the peak ground acceleration (PGA)

CONCLUSION

The area around the Holtekamp bridge has a high earthquake hazard level. Amplification factor in the region greatly affects the increase in the level of earthquake shaking. Required good preparation of earthquake hazard mitigation strategies to minimize casualties and losses caused by the earthquake in the future. The result shows that Peak Ground Acceleration (PGA) around Holtekamp Bridge have values from 32,74-207 gal with VI-IX Modified Mercalli Intensity (MMI). Based on the risk level classification of the earthquake of these data can be concluded that around Holtekamp Bridge vulnerable of the earthquake, which has the risk level is from the low risk up to the third highest risk.

ACKNOWLEDGEMENT

The author would like to thank United States Agency for International Development (USAID) for the training and mentoring support in writing this article, through the Sustainable Higher Education Research Alliance (SHERA) Program for Universitas Indonesia's Scientific Modeling, Application, Research and Training for City-centered Innovation and Technology (SMART CITY) Project. Especially thank to Mr. Mark D. Russel as my mentoring support in writing this article. This Journal is dedicated to National Road Planning and Supervision (P2JN) Jayapura, Papua as a government institution under the Public Works Service for data collection permits, also we thanks to staff a center for Volcanology and Geological Hazard Mitigation – Geology Agency, Indonesia, especially Athanasius Cipta as a Geologist in this institution which has helped to identify earthquake source data and to take microtremor measurement. And also the excellences: Dr. Dicky Muslim, Ir. MSc., as our respectful counterpart in scientific discussions, and the whole academic communities and staffs of Universitas Padjadjaran (UNPAD) in Bandung, Indonesia.

REFERENCES

- Suwarna, N., Noya, Y. (1995). Geological Map of the Jayapura (Peg. Cycloops) Quadrangle. *Geological Research and Development Center*, Irian Jaya.
- Irsyam, M., Sengara, W., Aldiamar, F., Widiyantoro, S., Triyoso, W., Hilman, D., Kertapati, E.K., Meilano, I., Asrurifak, M., Ridwan, M., Suhardjono. (2010). Earthquake Hazard Map of Indonesia as Reference for Engineering and Design of Earthquake Resistant Infrastructures. *Ministry of Public Work*, Jakarta, Indonesia.
- Irsyam, M., Aldiamar, F., Widiyantoro, S., Natawidjaja, D.H., Meilano, I., Rudianto, A., Hidayati, S., Triyoso, W., Hanifa, N.R., Djarwadi, D., Sunarjito, L.F. (2017). Sources and Earthquake Hazard Map of Indonesia 2017, ISBN No. 978-602-5489-01-3. *National Earthquake Study Center, Ministry of Public Work and Housing*, Bandung, Indonesia.
- Cipta, A., Robiana, R., Griffin, J.D., Horspool, N., Hidayati, S., Cummins, P. (2016). A Probabilistic Seismic Hazard Assessment for Sulawesi, Indonesia. *The Geological Society of London, Special Publication*, 441. Accessed on <http://www.inderscience.com/filter.php?aid=75180>
- Douglas, J. Ground-Motion Prediction Equations. (1964-2010). *BRGM Geoscience for a Sustainable Earth*, BRGM/RP-59356-FR, February.
- Nakamura, Y. (1989). A Method for Dynamic Characteristic Estimation of Subsurface Using Microtremor on the Ground Surface. *Q.R. of R. T. I.* 30(1), 25-33.
- Lunga, S., Minarto, E., Mantiri, S. Y. Y. (2015). The Earthquake Risk Level Mapping at Jayapura City Based on Microtremor measurement. *Spectra: Physics and Its Application Journal*, Institut Teknologi Sepuluh November, Surabaya, Indonesia, 16(1).
- ISC. (2012). Earthquake Search. *International Seismological Centre*, UK, available at <http://www.isc.ac.uk/search/bulletin/>
- Booreand, D. M., Atkinson, G. M. (2008). Earthquake Spectra. 24(1).
- Campbelland, K. W., Bozorgnia, Y. (2008). Earthquake Spectra. 24(1)
- Koulali, A., P. Tregoning, S. McClusky, R. Stanaway, L. Wallace & G. Lister (2015). New Insight into the present-day Kinematics of Papua New Guinea from GPS. *Geophysical J. Int.* 202, 2, p. 993-1004.