

## The effect of musa acuminata stem in increasing macrophage and neovascular cells of healing process

Maharani Laillyza Apriasari\*, Dewi Puspitasari\*\*, A.Retno Pudji Rahayu\*\*\*, Diah Savitri Ernawati\*\*\*\*

\*Departement of Oral Medicine, Faculty of Dentistry, Lambung Mangkurat University

\*\*Departement of Dental Biomaterial, Faculty of Dentistry, Lambung Mangkurat University

\*\*\*Departement of Oral Pathology, Faculty of Dentistry, Airlangga University

\*\*\*\*Departement of Oral Medicine, Faculty of Dentistry, Airlangga University

### ABSTRACT

**Introduction:** *Musa acuminata* stem has both of imunostimulatory and imunosuppressant effects that are influenced by their concentrations. The study aimed to analyze the effect of Mauli banana stem extract (EMBS) to increase the number of macrophage and neovascular cells in traumatic ulcer healing. **Methods:** *Rattus norvegicus* of male Wistar strain were used as model of traumatic ulcer. The left buccal mucous was biopsied, then used the histopathology method to find the number of macrophage and neovascular cells. **Results:** EMBS gel was effected when administered at a concentration of 37.5% because it significantly increased the number of macrophage and neovascular cells in traumatic ulcer healing on the 3<sup>rd</sup> day to 5<sup>th</sup> days. **Conclusion:** It can be concluded that EMBS within concentration of 37.5% can accelerate ulcer healing through the increasing number of macrophage and neovascular cells.

**Keywords:** Condensed tannin, macrophage, *Musa acuminata*, neovascular, Terpenoid saponin

p-ISSN: 1979-0201; e-ISSN: 2549-6212; Available from: <http://jurnal.unpad.ac.id/pjd/article/view/18324>

DOI: <http://dx.doi.org/10.24198/pjd.vol30no2.18324>

Submission: November 14, 2017; Accepted: May 22, 2018; Published online: July 31, 2018

---

### INTRODUCTION

Ulceration of the oral cavity is one of the most common disorders in the oral cavity. This disorder is characterized by the existence of lesions such as ulcers which lose their epithelial layers exceeding the basal membranes.<sup>1-3</sup> Ulceration in the oral cavity becomes the main reason for patients to consult a dentist. The ulceration may be recurrent, rare occurred, or being permanent ulcerations.<sup>4</sup>

Ulceration in the oral cavity will interfere with the process of mastication, resulting in the disorders of nutrient intake. The therapy of ulceration in the oral cavity is essentially symptomatic to reduce inflammation, pain, and accelerate wound healing.<sup>5</sup>

Previous research indicates that gel extract of mauli banana stem (EMBS) can accelerate and increase epithelium thickness of the buccal mucosal wound healing in mice.<sup>6-8</sup> EMBS has bioactive materials of mauli banana consisted of 67.59%

of *tannin*, 14.49% of *saponin*, 0.34% of *alkaloids*, 0.44% of *ascorbic acid*, 0.25% of *flavonoids*, and 0.006% of *lycopene*.<sup>6</sup> Condensed *tannins* can induce tyrosine phosphorylation of insulin receptor on the cell surface of *3T3-L1 adipocytes in vitro*, so it can activate *phosphatidylinositol 3-kinase* pathway (PI3K), which plays a role in cell proliferation.<sup>9,10</sup> *Terpenoid saponins* will be captured by the G protein receptor on macrophages, then through a process that produces a protein kinase C, it activates NFkB, thereby increasing the activity and number of macrophages.<sup>11</sup>

Condensed *tannins* and *terpenoid saponins* are immunomodulators that can increase the activity and the number of macrophages.<sup>9-11</sup> Previous research has also proven that the gel extract of mauli banana stem can increase the amount of HIF-1 $\alpha$ , Hsp90 $\alpha$ , and VEGF.<sup>8</sup> Based on these facts, the study aims to analyze the effects of the gel extract of mauli banana stem to increase the number of macrophages and neovasculars on mucosal healing in *traumatic ulcers*.

## METHODS

This experiment was a true experimental research. The experimental units were 40 rats of *Rattus norvegicus* of male Wistar strain. There were the traumatic ulcer models. The biopsy was taken from the ulcer in the left buccal mucous. The criteria of rats were healthy, weighed 250-300 grams, and aged 2-3 months. Ethical approval was obtained at the Faculty of Dentistry, Airlangga University No 56/ KKEPK.FKG/ VI/ 2015.

Mauli banana plant was taken after producing banana fruit. The maceration method was used, followed the ethanol-free examination. The gel compositions of ethanol extract of Mauli banana stems were consisted of 3 levels i.e of 25%, 37.5%, and 50%. The extracts were mixed with 15% HPMC, 1% Tween 80, 8% Propylene glycol, 5 drops of peppermint oil and distilled water until reaching concentration of 100%. Materials to make the preparation and staining of histopathology were 10% BNF, alcohol, *xylol*, paraffin, and *Haematoxylin Eosin* (HE) staining.

The experiment used 40 rats, divided into 4 groups of treatment i.e, the rats administrated gel only as a negative control group (K), rats administrated with 25% of EMBS (P1), rats admin-

istrated with 37,5% of EMBS (P2), and rats administrated with 50% of EMBS (P3). Each group was consisted 10 rats. The EMBS was applied topically every 6-8 hours per day.

The treatment of experimental rats was started by giving inhaled ether anesthesia, then the left buccal mucous was injured with *biopsy punch* with a diameter of 6 mm and a depth of 1 mm, and then it was taken with a *scalpel*. The left buccal mucous of the rats was biopsied on the 3<sup>rd</sup> and 5<sup>th</sup> day after being decapitated. The tissue was soaked in 10% buffered formalin (pH 7.4), and then it was made into preparations. The next phase were done histopathology tests by using *Haematoxylin Eosin* (HE) staining technique to see the number of macrophage and neovascular cells. The number of macrophage and neovascular cells were calculated in three different field locations using a light microscope (Olympus, United States) under 400x magnification and subsequently averaged.

## RESULTS

The results of statistical analysis using ANOVA and Post Hoc LSD examinations indicated that there was a significant difference ( $p < 0.05$ ) in the number of macrophages based on the time of EMBS gel administration in all groups, except in the group of rats administration with EMBS gel at a concentration of 0% (negative control) on the 3<sup>rd</sup> day compared to the 5<sup>th</sup> day ( $p = 0.12$ ). In the treatment groups of EMBS gel of 25% ( $p = 0.006$ ), EMBS gel of 37.5% ( $p = 0.003$ ), and EMBS gel 50% concentration ( $p = 0.002$ ). In this study, there were increased numbers of macrophages on the 3<sup>rd</sup> day compared to the 5<sup>th</sup> day in all groups of EMBS gel. The highest increasing number of macrophages occurred in the EMBS gel of 37.5% concentration, i.e. from 10 to 13 cells (Table 1).

Based on time variable of EMBS gel application, on the 3<sup>rd</sup> day there was a significant difference between the number of macrophages of EMBS gel of 0% concentration (negative control) and all treatments, except for the EMBS gel of 25% concentration. On the 3<sup>rd</sup> day, there was a significant difference between the number of macrophages of EMBS gel of 25 % concentration and concentrations of 37.5% and 50%. On the 3<sup>rd</sup> day there was a significant difference between

Table 1. The number of macrophage cells in traumatic ulcer healing on 3<sup>rd</sup> until 5<sup>th</sup> days

| Group      | Time            |                   | p      |
|------------|-----------------|-------------------|--------|
|            | 3 days          | 5 days            |        |
| 0% EMBS    | 5.0±1.22 (3-6)  | 6.4±1.14 (5-8)    | 0.12   |
| 25% EMBS   | 5.8±0.84 (5-7)  | 8.4±0.89 (7-9)    | 0.006* |
| 37.5% EMBS | 9.6±1.52 (8-11) | 12.4±1.14 (11-14) | 0.003* |
| 50% EMBS   | 9.0±1.58 (7-11) | 12.0±2.24 (9-15)  | 0.002* |
| p          | 0.000*          | 0.000*            | 0.000* |

Notes: \* significant with  $\alpha=0,05$

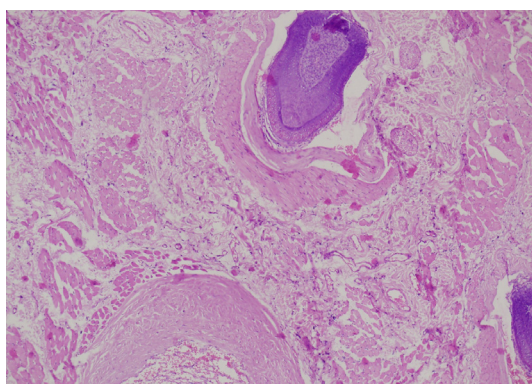


Figure 1. The results of histopathology test showed the indicate of macrophage and neovascular cells on the 3<sup>th</sup> days

the number of macrophages of EMBS gel of 50% concentration and the EMBS gel of 37.5% concentration (Fig.1).

Based on time variable of EMBS gel application, on the 5<sup>th</sup> day, there was a significant difference on the number of macrophages between EMBS gel of 0% concentration (Negative control) and EMBS gel of 25%, 37.5% and 50% concentrations. On the 5<sup>th</sup> day, there was a significant difference on the number of macrophages between EMBS gel of 25% and EMBS gel of 0% concentration (Negative control), also with EMBS gel of 37.5% and 50% concentrations. On the 5<sup>th</sup> day, there was a significant difference on the number of macrophages between EMBS gel of 37.5 % concentration and all treatments, except with EMBS gel of 50 % concentration. On the 5<sup>th</sup> day, there was a significant difference on the number of macrophages between EMBS gel of 50 % and all treatments except with EMBS gel of 37.5% concentration (Fig.2).

The results of statistical analysis using ANOVA and Post Hoc LSD examinations indicated that there was a significant difference ( $p < 0.05$ ) on the number of neovasculars based on time variable

Table 2. The number of neovascular cells in traumatic ulcer healing on 3<sup>rd</sup> until 5<sup>th</sup> days

| Group      | Time             |                   | p      |
|------------|------------------|-------------------|--------|
|            | 3 days           | 5 days            |        |
| 0% EMBS    | 4.60±1.52(3-7)   | 6.60±2.97(3-11)   | 0.216  |
| 25% EMBS   | 7.00±1.87(5-9)   | 11.25±0.96(10-12) | 0.005* |
| 37.5% EMBS | 10.60±2.07(9-14) | 17.60±5.03(12-25) | 0.021* |
| 50% EMBS   | 6.20±1.30(5-8)   | 9.20±2.28(7-13)   | 0.034* |
| p          | 0.000*           | 0.001*            | 0.000* |

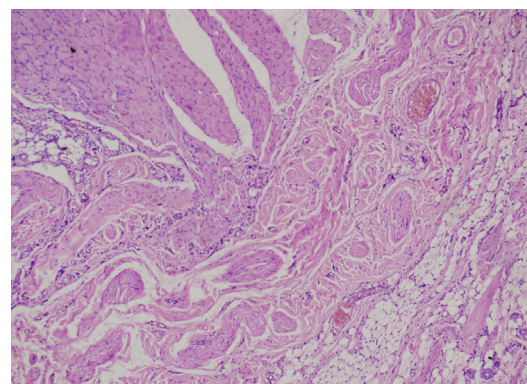


Figure 2. The results of histopathology test showed the indicate of macrophage and neovascular cells on the 5<sup>th</sup> days

of EBPM gel application in all groups, except in the group of EMBS gel of 0% concentration (negative control) on the 3<sup>rd</sup> day compared to the 5<sup>th</sup> day. In the treatment group of EMBS gel of 25% concentration ( $p = 0.005$ ), 37.5% concentration ( $p = 0.021$ ), and 50% concentration ( $p = 0.034$ ). In this study, there was an increasing number of neovasculars on the 3<sup>rd</sup> day compared to the 5<sup>th</sup> day in all groups of EMBS gel. The most significant increasing number of neovasculars occurred in the EMBS gel of 37.5% concentration which was from 12 to 19 cells (Table 2).

Based on time variable of EMBS gel application, on the 3<sup>rd</sup> day there was a significant difference between the number of neovasculars of EMBS gel of 0% concentration (negative control) and all treatments, except for the EMBS gel of 25% and 50% concentrations. On the 3<sup>rd</sup> day, there was a significant difference between the number of neovasculars of EMBS gel of 25% and 37.5% concentrations. On the 3<sup>rd</sup> day, there was a significant difference between the number of neovasculars of EMBS gel of 50% concentration and of 37.5% concentration (Fig.1).

Based on time variable of EMBS gel application, on the 5<sup>th</sup> day there was a significant difference between the number of neovasculars of EMBS gel of 0% concentration (negative control) and EMBS gel of 25% and 37.5% concentrations. On the 5<sup>th</sup> day there was a significant difference between the number of neovasculars of EMBS gel of 25% concentration and of 0% concentration (negative control) and of 37.5% concentration. On the 5<sup>th</sup> day, there was a significant difference between the number of neovasculars of EMBS gel of 37.5% concentration and all treatments. On the 5<sup>th</sup> day, there was a significant difference between the number of neovasculars of EMBS gel of 50% and 37.5% concentrations (Fig 2).

## DISCUSSION

Condensed tannins may bind in the  $\alpha$ -subunit of the insulin receptor in the cell membrane in vitro and may make kinase tyrosine residues in  $\beta$ -subunit undergo *autophosphorylation*. The *autophosphorylation* from tyrosine kinase receptors can bind with PI3K and activate it. Active PI3K can catalyze the PIP3 phosphorylation, then the PIP3 recruit two kinase proteins which are AKT and PDK1 heading to the plasma membrane and activating AKT. The AKT activation causes Rheb become active, it then triggers mTOR.<sup>9</sup> The mTOR will activate p 70 S6K and phosphorylation of 70 and 85 kDa isoform S6K.<sup>13</sup> The S6K then phosphorylates transcription factors of in the nucleus, which then inhibits CDK inhibitor. As a result, there is a CDK activation and it stimulates cell proliferation of macrophages.<sup>14</sup>

Terpenoid saponins can increase the number and activity of macrophages, which also *Centella asiatica*'s mechanism of immunomodulatory effect through the G receptor protein. *Centella asiatica* has terpenoid saponins as dominan bioactive. This causes the G protein with GDP in the cell membrane become closer to the ligand. The GDP will be replaced by GTP so that the G protein becomes active. Next, the binding between protein G and GTP heads to *adenyl cyclase*, then it activates *adenyl cyclase C phospholipase* to be *phosphoinositol* and results in *triphosphat inositol* (IP3) and *diacylglycerol* (DAG). PIP3 will follow the pathway just as the effect of tannins administration, while DAG will produce a protein

kinase C activates I $\kappa$ B kinase (IKK). Phosphorylase of IKK inhibits I $\kappa$ B, where I $\kappa$ B will be complex with NF- $\kappa$ B in the cytoplasm. This phosphorylation marks the degradation of I $\kappa$ B by the *proteasome*, which then releases NF- $\kappa$ B from complex inhibition. NF- $\kappa$ B protein is then freed and it then is transported into the nucleus, will next activate gen transcription that activates NF $\kappa$ B.<sup>11,15,16</sup>

In previous studies, *Astragalus* plants containing terpenoid saponins can increase NF $\kappa$ B expression along with mRNA from IL-1 $\beta$  dan TNF- $\alpha$  ctyokines. Terpenoid saponins causes effects of imunostimulator.<sup>17-19</sup> In the next process, it will trigger increasing number and activity of macrophages just as the ones occur during EMBS gel administration. This fact indicates that EMBS gel also possesses imunostimulator characteristic, because it is able to increase the number of macrophages in this study.

Macrophages play an important role in wound healing, since they produce growth factors, trigger angiogenesis and fibrogenesis. The released macrophages will fagocyte bacteria and clean up tissue debris. During the transition from the inflammatory process to the repair of wound process, the macrophages will stimulate cell migration, proliferation, and matrix network formation. The growth factors, among others, for angiogenesis include TGF $\beta$ , VEGF and FGF-2.<sup>20-22</sup>

In a condition lack of macrophages, what happens is the inhibition of wound healing.<sup>23</sup> It needs a balance number of neutrophils and macrophages in wound healing. On the other hand, in a chronical inflammation condition which inhibits wound healing, there is increasing number of neutrophils which trigger macrophage excess. This situation causes severe wound damage caused by too long hypoxia.<sup>8,24</sup>

Macrophages can control signals in angiogenesis process during the formation of granulation tissue which occur from the 4<sup>th</sup> until the 10<sup>th</sup> day after a wound was formed.<sup>21,25</sup> Neovasculars during the process of formation of granulation tissue are controlled by many cytokines and growth factors. Normally, macrophages during wound healing process are cells which prepare angiogenesis process while stopping it.<sup>21,25,26</sup> This phenomenon also occurs in the administration of *Terminalia chebula* extract which can accelerate wound healing through synergy effect of metanin



and other bioactives. The other studies indicate that the synergizing effect occurs when tannins and saponins are simultaneously given.<sup>27,28</sup>

In EMBS gel of 37.5% concentration, there is a strengthening effect of bioactives of condensed tannins and terpenoid saponins, resulting in increasing number of macrophage and neovascular cells. Mauli banana stem as an immunostimulator can increase the number of macrophage cells. Macrophages play an important role in wound healing which produce growth factors and trigger angiogenesis, so it can be increasing the neovascular cells. The angiogenesis process which is a critical part in the process of wound healing. Mauli banana stem as an antioxidant requires nutrients that support cell metabolism, as well as tannins and saponins to form the granulation tissue consisting of blood vessels that need oxygen for the improvement and growth of blood vessels.

Mauli banana is the antioxidant and immunostimulator agent, so it called an immunomodulator topical drug. This research proved EMBS gel of 37.5% concentration can be recommended as the topical drug to accelerate wound healing including traumatic ulcer. It can be concluded EMBS gel within concentration of 37.5% can accelerate ulcer healing through the increasing number of macrophage and neovascular cells.

## REFERENCES

1. Cavalcantel GM, de Paulal RJS, de Souza LP, Sousal FB, Motall MRL, Alves APNN. Experimental model of traumatic ulcer in the cheek mucosa of rats. *Acta Cirúrgica Brasileira* 2011;26(3):299.
2. Laskaris G. Treatment of oral diseases: a concise textbook. New York: Thieme, 2005. P. 169.
3. Regezi, Joseph A, Sciuba JJ, Jourdan RCK. Oral pathology: clinical pathologic correlations. 5<sup>th</sup> Ed. Saunders, St Louis. 2015. P. 23-6.
4. Field A, Longman L. Tyldesley's Oral Medicine, Ed 5<sup>th</sup>, New York: Oxford, 2003. P. 51.
5. Apriasari ML. The management of chronic traumatic ulcer in oral cavity. *Maj Kedok Gigi Dent J* 2012;45(2):68-72.
6. Apriasari ML, Iskandar, Suhartono E. Kandungan ekstrak metanol batang pisang mauli (*Musa sp*) 100%. *Internat J Bioscience Biochemistry and Bioinformatics*, 2014;4(2):110-5.
7. Apriasari ML, Endariantari A, Oktaviany IK. The effect of 25% mauli banana stem extract gel to increase the epithel thickness of wound healing process in oral mucosa. *Majalah Kedokteran Gigi Dental Journal*, 2015;48(3): 150-3.
8. Apriasari ML, Dachlan YP, Ernawati DS. Effect of *musa acuminata* stem by immunohistochemistry test in ulcer. *Asian J Biochemistry* 2016;11(3):135-41.
9. Albert B, Johnson A, Lewis J, Raff M, Robert K, Walter P. *Molecular biology of the cell*. 5<sup>th</sup> ed. Garland Science. United States of Amerika. 2008. P. 928-30.
10. Taher M, Majid FAA, Sarmidi MR, A proantocyanidin from *cinnamomum zeylanicum* stimulates phosphorylation of insulin receptor in 3T3-L1 adipocytes. *Jurnal Teknologi* 2006;44(F):53-68.
11. Besung INK. *Pegagan (Centella asiatica) sebagai alternatif pencegahan penyakit infeksi pada ternak*. *Buletin Veteriner Udayana* 2009(2):61-7.
12. Tsala DE, Amadou D, Habtemariam S. Natural wound healing and bioactive natural products. *Phytopharmacology* 2013;4(3):532-60.
13. James MJ, Zzomerdijk JCBM, Phosphatidylinositol 3-kinase and mTOR Signaling Pathway Regulate RNA Polymerase I Transcription in Response to IGF-1 and Nutrients. *The Journal of Biological Chemistry* 2004;279(10):8911-18.
14. Mori S, Nada S, Kimura H, Tajima S, Takahashi Y. The mtor pathway controls cell proliferation by regulating the foxo3a transcription factor via SGK1 Kinase. *PLoS ONE*. 2014;9(2):e88891.
15. Brancato SK, Albina JE. Mini review: wound macrophages as key regulators of repair origin, phenotype, and function. *American J Pathology* 2011;178(1):19-25.
16. Napetschnig J, Wu H. Molecular Basis of NF-κB Signaling. *Annu Rev Biophys* 2013;42(19):1-19.
17. Malek S, Chen Y, Huxford T, Ghosh G. IκBB, but not IκBα, functions as a classical cytoplasmic inhibitor of NF-κB dimers by masking both NFκB nuclear localization sequences in resting cells. *J Biol Chem* 2001;276(48):45225-35.
18. Huang C, Jacobson K, Scaller MD. A role for jnk-paxillin signaling in cell migration. *Cell*

- Cycle 2004;3(1):4-5.
19. Papa S, Zazzeroni F, Pham CG, Bubici C, Franzoso G. Linking JNK signaling to NFkB: A key to survival. *J Cell Science* 2004;117(22):5197-205.
20. Morgan MJ, Liu Z. Review: crosstalk of reactive oxygen species and NFkB signaling. *Cell Research* 2012;21:103-115. Larjava H, Oral Wound Healing; Cell Biology and Clinical Management. Wiley Blackwell, West Sussex, UK. 2011. P. 43
21. Bedir E, Pugh N, Calis I, Pasco DS, Khan IA, Immunostimulatory Effects of Cycloartane-Type Triterpene Glycosides from Astragalus Species. *Biol Pharm Bull*, 2000;23(7):834-7.
22. Tonnesen MG, feng X, Clarck RAF. Angiogenesis in wound healing. *The cosiety for investigative dermatology* 2000;5(1):40-5.
23. Guo S, Dipietro LA. Factors affecting wound healing. *J Dent Res* 2010;89(3):219-29.
24. Soni H, Singhai Ak. A recent update of botanical for wound healing activity. *Internat Res J Pharam* 2012;3(7):1-6.
25. Larjava H. Oral wound healing; cell biology and clinical management. Wiley Blackwell, West Sussex UK. , 2012. P. 43.
26. Brancato SK, Albina JE. Mini review: wound macrophages as key regulators of repair origin, phenotype, and function. *Am J Pathology* 2011;178(1):19-25.
27. Majewska I, Darmach EG. Proangiogenic activity of plant extracts in accelerating wound healing: A new face of old phytochemicals. *Acta Biochimica Polonica* 2011;58(4):449-60.
28. Li K, Diao Y, Zhang H, Wang S, Zhang Z, Yu B, Huang S, Yang H. Tannin extract from immature of terminalia chebula fructus retz promote cutaneous wound healing in rats. *BMC Complementary and Alternative Medicine* 2011;86(11):1-9.